

# Youth Adult Voluntary Foster Care

The Young Adult Voluntary Foster Care program allows youth in foster care, as they become legal adults, to voluntarily remain under state care until age 21 -- if they are in school (high school, GED, vocational, or college), in job training, employed 80 hours per month, or are deemed incapable of participating in employment/education activities due to a documented medical condition.

The Youth Adult Voluntary Foster Care program allows for a variety of benefits to be extended to youth in transition, including:

- Extension of foster care payments
- Continued oversight by a caseworker and counseling
- Continued health care coverage
- More time to finish high school and/or pursue vocational or higher education

Young adults who qualify under the program have options in choosing living arrangements, including staying with their current foster parents, renting a home/apartment, even staying in a college dorm.

For more information, ask for the Youth Adult Voluntary Foster Care Liaison at your local MDHHS office, or visit:

[www.michigan.gov/FosterCare1821](http://www.michigan.gov/FosterCare1821)

## About Fostering Success Michigan

Through generous support from the Kresge Foundation, the Havirmill Foundation, Western Michigan University, and others, Fostering Success Michigan is building a statewide network through a collective-impact strategy that strives to prepare young people in foster care between the ages of 12 to 25 across the state of Michigan for success in higher education and beyond. Fostering Success Michigan will increase awareness, access, and success in higher education and post-college careers for students with experience in foster care.

We offer networking opportunities and valuable resources.  
To find out more at, please visit:

[www.fosteringsuccessmichigan.com](http://www.fosteringsuccessmichigan.com)



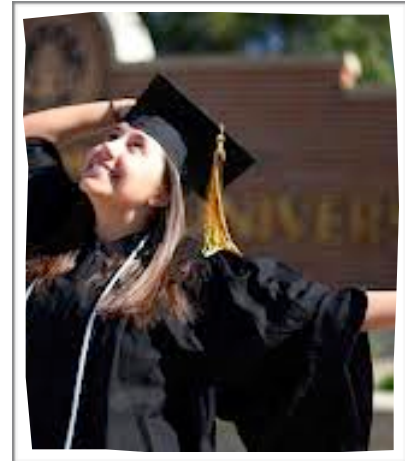
# Getting to know...Higher Education Resources For Students From Foster Care



## Who should use this guide:

This guide can be used by anyone who is interested in learning more about support programs, scholarships, or other resources available to students with experience in foster care at Michigan colleges and universities.

This includes students from foster care, DHHS case managers and education planners, Local College Access Network coordinators, foster parents and caregivers, High School counselors, and college advisors.



## How to use this guide:

This guide highlights the diversity of postsecondary programs and support offered to students from foster care in Michigan and we will continue to add to it as more programs develop at schools across the state. Please contact each institution directly for more information on individual programs and scholarship opportunities. We know there is a TON of information in this guide. You can do it!!

“Education is the movement from darkness to light” ~ Allan Bloom

[www.fosteringsuccessmichigan.com](http://www.fosteringsuccessmichigan.com)

## Higher Education Resources For Students From Foster Care

### Aquinas College

#### *Fostering Success Scholarship Initiative*

<https://www.aquinas.edu/undergraduate-admissions/aquinas-college-fostering-success-scholarship-initiative>

Aquinas awards up to 2 scholarships per year to incoming Freshman students who meet the eligibility requirements. The scholarship covers tuition, room and board, book costs, and activity fees for the academic year, for up to five years as a full-time student. The scholarship will also help with the cost of attending one of the semester-long International Programs if the student chooses to participate in one. Students are monitored by a faculty advisor as well as the Academic Services office.

#### **Program eligibility/affiliation criteria:**

- Students must be in Michigan foster care at the time they turn 18 or upon high school graduation.
- They must have achieved a minimum 3.0 Grade Point Average on a 4.0 scale at time of admission.
- Have an ACT Composite of 22 or above [or SAT (Critical Reading and Mathematics) score of 1020 or higher].



#### **Highlights of majors, programs, departments, and activities:**

Aquinas College is a Catholic, liberal arts institution that offers over 60 majors from which to choose. Top programs include education, many areas of business, and the sciences, most notably pre-med. Aquinas is one of four colleges in the world (the only in the US) to offer a POHI (Physical or Other Health Impairment) education program using the conductive education method; graduates of this program are certified as conductors and work with children with special needs at conductive learning centers, but are also certified to teach at the elementary level or in special education.

#### **Program Contact:**

Raul Hernandez Guzman, Admissions Representative

**Phone:** 616-632-2861

**Email:** [rih001@aquinas.edu](mailto:rih001@aquinas.edu)

### Oakland University

[www.oakland.edu](http://www.oakland.edu)

#### **Highlights of majors, programs, departments, and activities:**

Oakland University is recognized as a student-centered, doctoral research institution with a global perspective. Oakland provides a distinct educational experience with flexible class schedules and state-of-the-art facilities, student services, classroom technologies, research labs, internships and research opportunities with corporate partners.

#### **Oakland Campus Champion**

Krista H. Malley, Ph.D.

Director of Student Success

**Phone:** 248-370-4482

**Email:** [khmalley@oakland.edu](mailto:khmalley@oakland.edu)



## Michigan Financial Aid Champions

Financial Aid Champions are professionals in Financial Aid offices across Michigan that are prepared to help students with experience in foster care. These Champions are aware of the resources available to students with experience in foster care, and are able help complete forms, access scholarships, understand tuition and financial aid, and more!

Together, Student Scholarships and Grants (SSG) and Fostering Success Michigan (FSM) have worked together to create a comprehensive list of financial aid champions at Institutions in Michigan.

For a list of Financial Aid Champions, please visit:

[www.michigan.gov/documents/mistudentaid/Foster\\_Care\\_Financial\\_Aid\\_Champions\\_490367\\_7\\_513851\\_7.pdf](http://www.michigan.gov/documents/mistudentaid/Foster_Care_Financial_Aid_Champions_490367_7_513851_7.pdf)

# Higher Education Resources For Students From Foster Care

## Northern Michigan University

[www.nmu.edu](http://www.nmu.edu)

### Highlights of majors, programs, departments, and activities:

Northern Michigan University, located in Marquette, Michigan, is a dynamic four-year, public, comprehensive university that has grown its reputation based on its award-winning leadership programs, cutting-edge technology initiatives and nationally recognized academic programs.

#### NMU Campus Champion

William Richards  
Assistant Dean of Students

Phone: 906-227-1700

Email: [dso@nmu.edu](mailto:dso@nmu.edu)



## Michigan Technological University

[www.mtu.edu](http://www.mtu.edu)

### Highlights of majors, programs, departments, and activities:

MTU is a public research university, home to more than 7,000 students from 60 countries around the world. Founded in 1885, the university offers more than 120 undergraduate and graduate degree programs in science and technology, engineering, forestry, business and economics, health professions, humanities, mathematics, and social sciences.

#### MTU Campus Champion

Angela Hoffman  
Assistant Director of Admissions

Phone: 906-487-1855

Email: [aehoffma@mtu.edu](mailto:aehoffma@mtu.edu)



Michigan  
Technological  
University

## Eastern Michigan University

### Mentorship Access Guidance In College (MAGIC)

[www.emich.edu/magic](http://www.emich.edu/magic)

Mentorship Access Guidance In College exists to increase the graduation rates among students who have experienced foster care or homelessness by removing barriers that interfere with academic success and the process of becoming a independent adult. The MAGIC Program does this by providing life skills training, mentorship, housing stability, social enrichment, and financial literacy. MAGIC is a federally-funded support program on campus that is designed to provide Eastern Michigan University students who were formerly in foster care with the necessary independent living skills to encourage a successful transition into adulthood, completion of a college degree, and career entry.

#### Program eligibility/affiliation criteria:

- Eligible students must be attending EMU or interested in attending EMU and will work with the MAGIC program in applying for and accessing financial aid and ETV funds.
- Students must have been in foster care on or after their 14th birthday and under the age of 20. Adoption while in care will not affect a student's eligibility with MAGIC as long as it took place after the 14th birthday.



#### Highlights of majors, programs, departments, and activities:

The EMU currently serves 23,000 students who are pursuing undergraduate, graduate, specialist, doctoral and certificate degrees in the arts, sciences and professions. In all, more than 200 majors, minors and concentrations are delivered through the University's Colleges of Arts and Sciences, Business, Education, Health and Human Services, Technology, and its graduate school.

#### Program Contacts:

Elise Buggs, MBA, Director of Academic Success Partnership

Phone: (734) 487-0899 Email: [emu\\_magic@emich.edu](mailto:emu_magic@emich.edu)

Shay Dandridge Webb, MA, LLPC, Independent Living Skills Coordinator

Phone: (734) 487-3293 Email: [idandridge@emich.edu](mailto:idandridge@emich.edu)

# Higher Education Resources For Students From Foster Care

## Ferris State University Ferris Youth Initiative (FYI)

<http://www.ferris.edu/HTMLS/administration/president/DiversityOffice/fofyi/homepage.htm>

The Ferris Youth Initiative program is a mentoring, financial assistance and life skills development program for students who are alumni of foster care. The goal of the Ferris Youth Initiative program is to help students complete a college degree. Recipients of the FYI Scholarship may receive up to \$4,000 per year, to be applied to any direct cost at Ferris State (tuition/fees, room/board, and/or books/supplies). Students will also be matched with a faculty and/or staff mentor and will also work with the Life-skills/Campus Coach. The FYI program is limited to 22 students.

### Program eligibility/affiliation criteria:

- Be 24 years old or younger by January 1 of the year they will enroll for classes.
- Provide documentation to verify their orphaned status (orphans only).
- Qualify for the Chaffee/Youth in Transition (YIT) or Refugee Educational Training Voucher (REV)
- Submit Free Application for Federal Student Aid (FAFSA).
- Demonstrate unmet need, as determined by the FAFSA.
- Be enrolled and attending classes on the Big Rapids campus.



### Highlights of majors, programs, departments, and activities:

With a student-to-teacher ratio of 16 to 1, Ferris offers student-centered professional and technical educations with a solid base of general education. More than 89 percent of degrees awarded at Ferris since 2006 have been for majors that align with in-demand occupations. With more than 180 degrees from associate to Ph.D., Ferris collaborates with industry partners to assure your education is relevant, preparing you for a rewarding professional life.

### Program Contact:

Janette Ward, Independent Living Coordinator

Phone: (231) 591-5962

Email: [wardj35@ferris.edu](mailto:wardj35@ferris.edu)

## Michigan Designated Campus Champions (continued)

### Grand Rapids Community College

[www.grcc.edu](http://www.grcc.edu)

#### Highlights of majors, programs, departments, and activities:

Grand Rapids Community College has joined more than 200 other institutions in 34 states and the District of Columbia in the Achieving the Dream: Community College Count Initiative (ATD). GRCC national designation awarded to community colleges that commit to improving student success and closing achievement gaps.

#### GRCC Campus Champion

Kristi Welling  
Financial Aid Customer Service Manager

Phone: (616) 331-3401

Email: [kwelling@grcc.edu](mailto:kwelling@grcc.edu)



### Lake Superior State University

[www.lssu.edu](http://www.lssu.edu)

#### Highlights of majors, programs, departments, and activities:

Lake Superior State University is a personal, small-town school that provides a superior blend of liberal and technical studies in the natural setting of Michigan's Upper Peninsula. LSSU offers undergraduate degrees in 45 areas of study that attract students from every county in Michigan, more than a dozen states and provinces, and nine nations.

#### LSSU Campus Champion

Shelly Wooley  
Program Director

Phone: 906-635-2664

Email: [swooley@lssu.edu](mailto:swooley@lssu.edu)





# Higher Education Resources For Students From Foster Care

## Michigan Designated Campus Champions

A Designated Campus Champion (DCC) is a staff or faculty on a postsecondary institution campus who is willing to be identified as a resource partner for any students from foster care attending that institution. Designated Campus Champions are willing and able to connect students who have experienced foster care to resources within their network that will help them to succeed. Please check out the FSM website often for updates to our DCC and Financial Aid Champions list!

### Central Michigan University

[www.cmich.edu/](http://www.cmich.edu/)

#### Highlights of majors, programs, departments, and activities:

From its roots as a teachers' college, Central Michigan University has grown to offer nationally acclaimed programs in areas ranging from the health professions and engineering to business and communications. CMU offers more than 200 academic programs at the undergraduate, master's, specialist, and doctoral levels.

#### CMU Campus Champions

Mary Henley, Director, MI GEAR UP

Phone: 989-774-1585 Email: [Mary.Henley@cmich.edu](mailto:Mary.Henley@cmich.edu)

Traci Guinn, Executive Director, Center for Inclusion and Diversity

Email: [guinn1tl@cmich.edu](mailto:guinn1tl@cmich.edu)



### Grand Valley State University

#### Fostering Laker Success

[www.gvsu.edu/cwge/fostering-laker-success-167.htm](http://www.gvsu.edu/cwge/fostering-laker-success-167.htm)

GVSU's Fostering Laker Success serves students who have experience in foster care or other out of home placement. Through campus collaboration we provide a supportive network to ensure student success on and off campus. Together we work to help students achieve their academic and personal goals.

#### Program eligibility/affiliation criteria:

- Must be 20 years of age or under
- Were eligible for Youth in Transition (YIT) (John H. Chafee Independent Living Act of 1999) funding when their foster care case was open. Foster care case may still be open.
- Have been in an eligible foster care or non-secure delinquency placement supervised by the Department of Human Services (MDHHS) at age 14 or older.



#### Highlights of majors, programs, departments, and activities:

Grand Valley has 200+ areas of study and a vibrant campus culture, you'll have a college experience that is as unique as you are. By the time you graduate, you'll be ready to give, to create, and to make a difference. That's the Laker Effect! With an average class size of 26 students, that means an even more personal, interactive, and rewarding classroom experience for you.

With student life programming, a variety of student organizations, annual traditions, diversity and inclusive resources, sustainability initiative, and on-campus space to relax and socialize, you'll always have plenty of opportunities to enjoy college life outside of the classroom. Students at Grand Valley truly enjoy a vibrant campus life.

#### Program Contact:

Jessica R. Campbell MSW, Independent Living Skills Coach

Phone: (616) 331-2748

Email: [campbej1@gvsu.edu](mailto:campbej1@gvsu.edu)

# Higher Education Resources For Students From Foster Care

## Kalamazoo Valley Community College Campus Support Program

[www.kvcc.edu/services/successcenter/LifeResource.htm](http://www.kvcc.edu/services/successcenter/LifeResource.htm)

The program is connected to key campus champions in a variety of offices across campus that are committed to supporting students from foster care by providing opportunities and resources. The program is also partnering with the Seita Scholars program at Western Michigan University to provide mentoring and peer to peer guidance.



### Program eligibility/affiliation criteria:

- Applying by January is encouraged, but not mandatory.
- All students must be registered prior to the first week of classes.

### Highlights of majors, programs, departments, and activities:

Kalamazoo Valley Community College is a two-year community college in Southwest Michigan that offers degrees and certificates in scores of academic programs, occupations and trades. Popular transfer programs include Business Administration, Social Work, Engineering, Education, Pharmacy and Physical Therapy. Notable go to work programs include Art and New Media, Wind Turbine Technician Academy, Nursing, and Dental Hygiene. There are many off-campus housing options nearby.

### Program Contact:

Coty Dunten, Student Activities, Orientation, and Life Resources Coordinator

**Phone:** (269) 488-4825

**Email:** [cdunten@kvcc.edu](mailto:cdunten@kvcc.edu)

## Junior Year in High School (continued)

### ☐ Research Colleges:

You can research colleges that interest you through websites, your public library, or your high school counseling office. Some questions to consider:

- Does the college have a campus support program for students from foster care?
- Does the college have financial scholarships for students from foster care?
- Do you want to be near a big city? Midsize? Small? Rural? Urban?

### ☐ Meet With Your Guidance Counselor:

As early as you can in your Junior year, make an appointment to meet with your High School guidance counselor. Tell them you want to go to college or community college. Ask for their help in researching schools, applying for financial aid, taking tests (ACTs, PSATs, SATs) and completing applications. A few ideas:

- Ask about college fairs. These are events you can attend where many colleges provide presentations at once. A great way to learn about many schools at once.
- Attend a campus tour
- Ask about application fee and/or test waivers.

## Senior Year in High School

This is the year to make it happen! Complete your applications, apply for financial aid, and pay attention to deadlines!

### ☐ Choose the School You Are Going to Apply To

- Double check the due date deadlines and make sure you send in your application before that date.

### ☐ Complete Applications

- Ask about application fee waivers
- Start your essay early, get letters of recommendation

### ☐ Apply for Financial Aid: FAFSA, ETV, TIP, FYIT, and Scholarships

- See FSM's Getting to Know...Financial Aid in Higher Education For Students from Foster Care

### ☐ Get Ready for Transition

- If you are turning 18, sign up for Young Adult Voluntary Foster Care to continue your benefits.
- Secure summer housing and save money for items you may need

### ☐ Check for Orientation Dates

### ☐ Get a Copy of Diploma and High School Transcripts

# Higher Education Resources For Students From Foster Care

## Applying to College Checklist

There are many steps involved in preparing for and applying to college. Many of these “to-do” things need to be done a long time before you actually start college. Use this checklist to help you keep track of deadlines to consider, and things to do before you begin your college career!

### Sophomore Year in High School

This year you will be making decisions about your classes and activities that will prepare you for college while building your resume and application.

- ☐ Explore Your Interests and Potential Careers.
  - Talk to your High School Counselor about Career services, and find out if there are ways to explore different careers at your school.
  - When you’ve found a couple of careers you’re interested in, try to find some professionals you can talk to! Try calling a business or organization to ask for an informational interview, and ask:
    - How did you become interested in your field?
    - What did you major in or what credentials do you have?
    - Do you have any advice for me?
- ☐ Talk With Supportive Adults About Their College/School Experience
  - Examples of supportive adults include your case worker, foster family, biological family, teachers, guidance counselor, neighbors, and group leaders.
- ☐ Take AP Classes in High School and Other Advanced Level Courses
  - AP (Advanced Placement) and advanced level courses show colleges that you like to learn and you are willing to work hard. Classes like these can help your chances of being admitted.
- ☐ Participate In Extra-Curricular Activities
  - Colleges like to see that you participate in your school and community, so now is the time to become involved in Leadership activities, sports, and volunteering. A great resource to explore is your local MYOI (Michigan Youth Opportunities Initiative):

<http://fosteringuccessmichigan.com/library/myoi>

### Junior Year in High School

This year you will be educating yourself about colleges and preparing to apply! You will explore colleges and careers, begin taking exams, and talking to the supportive adults around you about how best to prepare for college!

## Lake Michigan College Start-to-Finish Program

[www.lakemichigancollege.edu](http://www.lakemichigancollege.edu)

The Start to Finish program is designed to assist current and former foster and underserved youth with their academic success. Students are offered 1-on-1 coaching, learning labs, academic support/tutoring, success planning, student support/advocacy, academic/transfer advising, transfer applications, academic intervention/progress reports, internship/job referrals, computer lab, laptop loan program, and transportation.

### Program eligibility/ affiliation criteria:

- Student at Lake Michigan College
- Currently or formerly in the foster care system
- There is no age limit for eligibility
- Must meet regularly with program staff



### Highlights of majors, programs, departments, and activities:

With over 80 programs of study, Lake Michigan College offers classes that can help you achieve an associates degree or certificate. LMC also offers many credits that are transferable to a four-year institution. No matter which path you choose, you’ll receive a high quality education in small class sizes from experienced professors who know your name. LMC is a leader in healthcare education, offers the Midwest’s first and only commercial teaching winery, as well as the Hanson Technology Center for CTE and Skilled Trades.

### Program Contact:

Charmae E. Sanders, M.A. Admissions Specialist, Lake Michigan College

**Phone:** (269) 927-6908

**Email:** [csanders@lakemichigancollege.edu](mailto:csanders@lakemichigancollege.edu)

Brandon Flowers, Learning Lab Coordinator

**Phone:** (269) 927-8156

**Email:** [bwflowers@lakemichigancollege.edu](mailto:bwflowers@lakemichigancollege.edu)

# Higher Education Resources For Students From Foster Care

## Lansing Community College

### Fostering Stars Program

<http://www.lcc.edu/supportservices/fosteringstars>

The Fostering Stars Program provides a wonderful opportunity and a supportive network for students currently engaged in or aging out of the foster care system. Some of the services provided in this program include: advising, academic support, counseling, community outreach, transportation assistance, one-on-one mentoring, group membership and networking opportunities. Additionally, students involved in this program will be able to connect with an independent life skills coach who is trained in providing guidance, empowerment, and improvement in all areas of life. A life skills coach seeks to empower others by helping them make, meet, and exceed goals.

#### Program eligibility/affiliation criteria:

- Students must be over 14 and under 21 years of age
- Students must have been eligible for YIT funding when foster care case was open (case may still be open)
- Students must have been in an eligible foster care or non-secure delinquency placement supervised by DHHS at 14 years of age or older



#### Highlights of majors, programs, departments, and activities:

Lansing Community College (LCC) is one of the most comprehensive colleges focused upon offering learning opportunities in four areas: career and workforce development, general education, developmental education, and personal enrichment. LCC is recognized as a local, state, national, and international leader in forging educational partnerships with business, industry, and government to better meet the needs of an ever changing worldwide marketplace.

#### Program Contact:

J Munley, Co-Coordinator/ Life Skills Coach

**Phone:** (517) 483-1028      **Email:** [munleyj@star.lcc.edu](mailto:munleyj@star.lcc.edu)

Kaila Herin Stevens, Co-Coordinator, Life Skills Coach

**Phone:** (517) 483-9625      **Email:** [herink@lcc.edu](mailto:herink@lcc.edu)

## Western Michigan University

### Seita Scholars Program

<http://wmich.edu/fosteringSUCCESS/seita>

The Seita Scholars Program is a scholarship and campus support program for Western Michigan University students who have lived some or all of their teenage years in foster care. The scholarship pays toward the cost of attendance for undergraduate courses at WMU. Books, housing, food and other living expenses are not included in the scholarship; however, most or all of these costs may be covered by financial aid and available state support, thereby making it possible for a Seita Scholar to earn an undergraduate degree with few or no student loans. All Seita Scholars are provided with a campus coach for academic and personal support, peer mentors, career mentors, support with basic living needs, and emergency support as needed.

The Seita Scholarship requires that students participate in the Seita Scholars Program and is only offered to fall semester admits to WMU.

#### Program eligibility/affiliation criteria:

- Qualify for the Educational Training Voucher (ETV)
- Submit the Free Application for Federal Student Aid (FAFSA)
- Be admitted to Western Michigan University as a first-time freshman or transfer student.
- Apply for the Seita Scholars Program.



#### Highlights of majors, programs, departments, and activities:

Western Michigan University has a wide array of majors that students may be interested in including Health Careers, Business, Social Work and Criminal Justice. In addition, WMU has over 300 student organizations for students to become involved in, and the Kalamazoo county Michigan Youth Opportunities Initiative (MYOI) board is based out of the Seita Scholars office.

#### Program Contact:

Ronicka Hamilton, Director, Seita Scholars Program

**Phone:** (269) 387-8362      **Email:** [seita-scholars@wmich.edu](mailto:seita-scholars@wmich.edu)



# Higher Education Resources For Students From Foster Care

## Wayne State University Transition to Independence Program (TIP)

[www.tipwaynestate.org](http://www.tipwaynestate.org)

TIP Wayne State's mission is to increase college access and improve graduation rates of foster care youth in Southeast Michigan and advance the educational well-being of youth who age out of foster care throughout the state, through the development and provision of best practices in academic excellence, applied learning, and research that examines issues of strategic importance to the child welfare and education service sector. TIP partners with several departments across campus including Financial Aid, Counseling, Admissions, Student Disability Services and Housing departments to name a few. TIP Wayne State offers students up to \$5,000 in grant funds per academic year to help offset housing and tuition costs. TIP also works with a plethora of off-campus partners who provides students with access to a number of free services ranging from assistance with legal issues to ETV enrollment.

### Program eligibility/affiliation criteria for the TIP scholarship program:

- Youth must have been in foster care on or after their 14th birthdays **OR**
- Were adopted on or after their 16th birthdays.



### Highlights of majors, programs, departments, and activities:

Wayne State University has a variety of majors offered at the undergraduate, masters, and PhD levels, the most popular majors include: Psychology, General; Biology/Biological Sciences, General; Organizational Behavior Studies; Criminal Justice/Safety Studies; Social Work, Medicine, Engineering and Accounting. Located in the heart of Detroit, WSU is surrounded by cultural and athletic opportunities such as the Detroit Institute of Arts, Detroit Historical Museum, Charles H. Wright Museum. WSU is near the NBA's Detroit Pistons, the NFL's Detroit Lions, NHL's Redwings, and the Detroit Tigers. Partnerships with the community provide opportunities for WSU students with experience in foster care to participate in many of these cultural and athletic entertainment venues at no cost.

### Program Contact:

Airika Buford, Campus Coach/ Community and Outreach Coordinator

**Phone:** (313) 577-0433

**Email:** [ar2584@wayne.edu](mailto:ar2584@wayne.edu)

Marla Garmo, Campus Coach

**Phone:** (313) 577-0063

**Email:** [marla.garmo@wayne.edu](mailto:marla.garmo@wayne.edu)

**Program Office:** (313) 577-0063

## Michigan State University Fostering Academics Mentoring Excellence (FAME) Program

<https://fame.socialwork.msu.edu/>

The MSU FAME Program is a resource center for MSU students who have been in the foster care system or other out of home placement. FAME exists to provide a supportive network for foster care alumni on campus and connect them to supportive services to ensure their success as college students and support them toward graduation. Key components of the FAME program include: individual coaching, mentoring program, care package delivery during final exams, interactive website for service linkages, campus champions in various departments throughout the university, financial assistance fund, student activity board, which provides leadership and advocacy experience and individualized life skills training and development.

### Program eligibility/affiliation criteria:

- Have been in foster care, guardianship, kinship care or relative placement.
- Have experienced homelessness.
- Considered independent due to extenuating circumstances.
- Students can become involved in FAME at any time during their college career and can choose to be involved in a variety of capacities. Minimum one year commitment for coaching and mentoring programs.



### Highlights of majors, programs, departments, and activities:

One of the top research universities in the country, Michigan State University offers top-ranked programs in education, packaging, business, medicine, criminal justice, political science, dietetics, and communication.

Students are encouraged to pursue the Spartan Advantage Grant at <http://finaid.msu.edu/spad.asp>

### Program Contact:

Andrea Martineau, FAME Program Coordinator/Life Skills Coach

**Phone:** (517) 353-5537

**Email:** [mart1525@msu.edu](mailto:mart1525@msu.edu)

<https://www.facebook.com/MSUFAME>

<https://twitter.com/MSUFAME>

# Higher Education Resources For Students From Foster Care

## Northwestern Michigan College YourNMC Program

[www.nmc.edu/your-nmc](http://www.nmc.edu/your-nmc)

The YourNMC program at Northwestern Michigan College is designed to help current and former foster youth who are transitioning into college life and adulthood. This program will provide students with hands on support as they get connected with NMC's campus. Supports include: mentoring, financial assistance, academic and personal support, and ongoing activities to get connected to campus life. Through the YourNMC program, students are assisted in navigating through the college system from admissions until graduation. Counselors, faculty, students and staff work together with the student to achieve academic and personal success. Connections to local resources are also available, including a Department of Human Services education planner and Michigan Youth Opportunities Initiative resources.

### Program eligibility/affiliation criteria:

- Currently in foster care or alumni of foster care
- Be accepted for admission to Northwestern Michigan College
- Under the age of 24

### Highlights of majors, programs, departments, and activities:

Northwestern Michigan College offers a great educational experience with an average classroom size of 20 students, which gives the students personal attention from the outstanding faculty. NMC offers Associate and Bachelor Degrees, and certifications in more than 50 programs (complete list available at [www.nmc.edu/programs](http://www.nmc.edu/programs)). The NMC University Center in Traverse City also offers bachelor's completion and advanced degrees. NMC has committed to a statewide agreement that helps students transfer credits earned at NMC to participating four-year colleges and universities.

### Program Contacts:

Lisa Thomas, Dean of Student Life

**Phone:** (231) 995-1118

**Email:** [lthomas@nmc.edu](mailto:lthomas@nmc.edu)

Paul Kolak, Counselor

**Phone:** (231) 995-1042

**Email:** [jpkolak@nmc.edu](mailto:jpkolak@nmc.edu)

Susan Greenfelder, Campus Coach

**Phone:** (231) 342-5310

**Email:** [greensfelders@michigan.gov](mailto:greensfelders@michigan.gov)



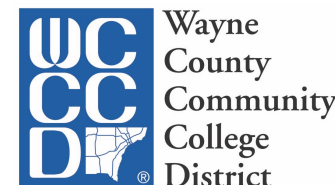
## WAYNE COUNTY COMMUNITY COLLEGE DISTRICT Scholars Motivated to Advocate & Realize their Talents (SMART)

[http://www.wcccd.edu/dept/ce\\_Smart\\_program.html](http://www.wcccd.edu/dept/ce_Smart_program.html)

The SMART Program exists to empower students who have experienced foster care by providing person-centered supportive services that aim to increase college access, improve graduation rates and promote overall well-being through their journey of becoming an independent adult and academic scholar. SMART provides 24 hour support from a Campus Coach, and support from Campus Champions that personally help students obtain vital resources and navigate through the academic process. With access to scholarships up to \$6000 per year, peer and professional mentors, career planning, life skills and more, the student is empowered to advocate, realize and utilize their talents to achieve phenomenal success.

### Program eligibility/affiliation criteria:

- Be between ages 18-21 years (22+ years for extended program) and have experience in foster care on or after 14th birthday. If adopted, must be after 16th birthday
- Must maintain a minimum 2.0 GPA, good attendance and satisfactory academic progress
- Attend regular SMART Program meetings and/or workshops



### Highlights of majors, programs, departments, and activities:

This college provides high-quality education and training, while offering more than 100 certificate and degree programs, including: nursing, renewable energy, criminal justice, auto body technology, Michigan Institute for Public Safety (MIPSE), and many more! WCCCD continues its mission to empower individuals, businesses and communities to achieve their goals through excellent accessible services, culturally diverse experiences and globally competitive higher education and career advancement.

### Program Contact:

Ericka Warren, LLMSW, Life Skills Campus Coach/Coordinator

**Phone:** (313) 943-4000

**Email:** [smartprogram@wcccd.edu](mailto:smartprogram@wcccd.edu)

Charnae Keith, Life Skills Campus Associate

**Phone:** (313) 815-0828

**Email:** [ckeith1@wcccd.edu](mailto:ckeith1@wcccd.edu)

# Higher Education Resources For Students From Foster Care

## Washtenaw Community College

### Realizing Educational Achievements Can Happen (R.E.A.C.H.)

<http://site.wccnet.edu/srwc/>

The REACH campus support program at WCC is based in the Student Resource Center. The REACH Program goal is to assist the college in providing students with a positive learning experience while attending WCC. REACH provides a case management model advocating on behalf of all students to help them overcome barriers that impede their success, and to promote an educational environment that values diversity, inclusiveness, and quality. REACH offers academic and career advising, education plans, grants for tuition and books, on and off campus childcare, career mentoring program, and an emergency food pantry. An on-site Life Skills Coach will assist students as needed.

#### Program eligibility/affiliation criteria:

- Must be enrolled in credit classes at WCC
- Must have been in an eligible foster care placement supervised by the Department of Health and Human Services at age 14 or older.
- Must be enrolled at WCC or considered a perspective WCC Student



#### Highlights of majors, programs, departments, and activities:

Excellent academics with strong occupational programs including advanced manufacturing, automotive, construction, digital media, health and information technology. Small class sizes and dedicated instructors all combine to give WCC students a high-quality education at an exceptional value. WCC has more than 100 programs providing a wealth of educational opportunities to pursue a degree, update job skills, or take a class for continuing education.

#### Program Contacts:

Kathy Stewart, LMSW, Life Skills Coach

Phone: (734) 973-3572

Email: [Kstewar3@wccnet.edu](mailto:Kstewar3@wccnet.edu)

Liz Orbits, LPC, NCC; MA Ed. Psyche., Manager, Student Resources & Women's Center

Phone: (734) 677-5105

Email: [eorbits@wccnet.edu](mailto:eorbits@wccnet.edu)

## Saginaw Valley State University / Delta College The Fostering an Academic Successful Transition (F.A.S.T.)

[www.facebook.com/FASTatSVSU](http://www.facebook.com/FASTatSVSU)

The F.A.S.T. Program is designed to aid current and former foster youth who are transitioning into college life and adulthood. This program will provide them with personal and academic counseling, life skills training, and pair them with a peer mentor who can also provide support. Each individual has varying needs and the F.A.S.T. Program is able to look at these specifically and provide services. Navigating the university system can be difficult, and the F.A.S.T. Program can guide eligible students through this system with the aid of a trained Life Skills Coach and peers who know how to help.

#### Program eligibility/affiliation criteria:

- Students of Saginaw Valley State University or Delta College
- Under the age of 21
- Currently in foster care or alumni of foster care.
- Must have been in an eligible foster care placement supervised by the Department of Health and Human Services at age 14 or older.



#### Highlights of majors, programs, departments, and activities:

Saginaw Valley State University (SVSU) has 90 programs that offer opportunities of self discovery, leadership, growth and international experiences.

Delta College has 150 programs to choose from in fields such as healthcare, human services, public safety, science and engineering, technical trades and manufacturing, computer science, business and administration, as well as arts and communication.

#### Program Contacts:

Vanessa Brooks Herd, Ed.D., LMSW, F.A.S.T. Program Manager

Phone: (989) 964-7254

Email: [vbherd@svsu.edu](mailto:vbherd@svsu.edu)

# Higher Education Resources For Students From Foster Care

## University of Michigan Ann Arbor *Blavin Scholars Program*

<http://blavinscholars.umich.edu>

The Blavin Scholarship is a need based award that provides \$2,000 to \$5,000 per student, per year. The Blavin Scholars Program works closely with the Financial Aid Office and scholars to determine need, and revisits this regularly. Support services include: Guidance through the admission and transition process, one-on-one support, access to support staff 24/7, 365 days a year, liaisons in important campus offices who are familiar with the program and the specific needs that may arise for scholars, group gatherings aimed at improving scholars' life skills and social supports, and emergency financial assistance.

### Program eligibility/affiliation criteria:

- Students must have been in foster care after age 13
- There is no age limit for eligibility. Students are eligible regardless of status
- Available to in-state or out-of-state student
- Must maintain full time student status and satisfactory academic progress.
- Demonstrate financial need via FASFA
- Must agree to follow Blavin Scholars participation agreement



### Highlights of majors, programs, departments, and activities:

A university ranked among the best in the world. A city ranked among America's best college towns. A diverse, dynamic, and friendly community to call your own. 220 degree programs. Caring faculty members who include Pulitzer Prize and Guggenheim winners, National Academy of Science members, MacArthur Fellows, and even a few Emmy winners. Almost 500,000 alumni who continue to transform communities across the globe. 1,200 student clubs, 25 NCAA Division 1 teams, and unlimited passion for all things Wolverine. One purpose: to offer you an education of uncommon value, depth, and breadth.

### Program Contact:

Miriam Connolly, Director for the Blavin Scholars Program

Phone: (734) 936-4830

Email: [mtaylor@umich.edu](mailto:mtaylor@umich.edu)

## University of Michigan, Flint *Mpowering My Success*

[www.umflint.edu/mpowering](http://www.umflint.edu/mpowering)

Mpowering My Success is a campus based support program at the University of Michigan-Flint that exists to support UM-Flint students who have experienced foster care. Mpowering My Success staff members understand that success comes in many forms, and we strive to set up students for personal, financial, and academic success on their path to graduation and beyond! We aim to provide students with many resources to overcome potential challenges, build and develop life skills, and obtain a college degree.

### Program eligibility/affiliation criteria:

UM-Flint students who are under the age of 21 and meet one of the following criteria may be eligible for the Mpowering My Success Program:

- Student was in foster care on or after their 14th birthday
- Student was adopted from foster care on or after their 16th birthday
- Student was in a non-secure delinquency placement supervised by DHHS on or after their 14th birthday



Students who have experienced foster care but do not meet at least one of the above criteria are still eligible for some services through the Mpowering My Success program.

### Highlights of majors, programs, departments, and activities:

With over 120 academic programs to choose from, UM-Flint has the degree to support your goals. Nationally recognized for their rigorous quality and relevant curriculums, our academic programs blend interactive classroom instruction and engaged learning experiences that extend beyond the classroom walls. While earning your degree, you'll be encouraged to use your education to make a meaningful difference in your community, and in your world.

### Program Contact:

Kayla Freeman, LMSW, Campus Coach

Phone: (810)762-3219

Email: [kfree@umflint.edu](mailto:kfree@umflint.edu)